

Naperville Park District Nike Park Expansion

Possible Lighted Athletic Facilities:

Ballfields
Tennis Courts
Soccer Fields
Multi-Purpose Fields
Basketball Courts

Other Possible Facilities:

Cricket Pitch
Trail
Playground
Recreation Center
Parking

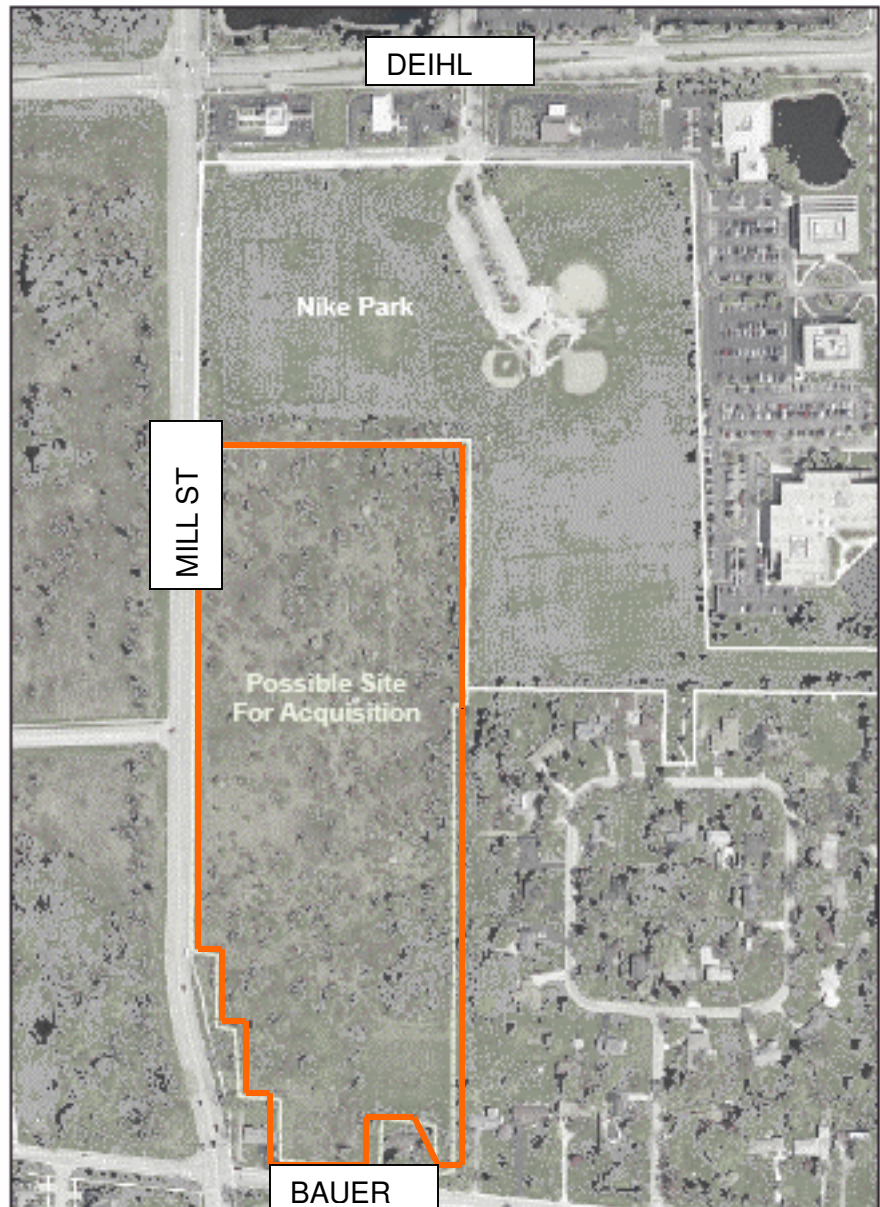


The **Naperville Park District** is measuring resident interest (including kids) in a 20-acre expansion of Nike Park in north Naperville. There is a meeting in rooms B&C at the Naperville Municipal Center, 6-7 pm Monday, April 2nd when they will be listening to the residents.

If not enough residents and kids respond, the NPD will sell their interest in the expansion properties to developers who will turn it into commercial properties (busy stores) and high-density apartments. This would heighten traffic on Mill Street and increase the student population at Mill Street School and Jefferson Middle School.

Please e-mail your comments to Eric Schutes (eshutes@napervilleparks.org), Director of planning, sign the petitions and come if you can to the meeting.

If you'd like to circulate a petition, please contact Kristiana Yao at kly@teiru.net. Thank you.



Mayneland farms



Mill Street School



For more information (including kid's petitions), see <http://www.centuryfarms.org/nike.php>